



Bartels AutoEngineer®

Version 7.2

Highlights

This document contains illustrated information about some of the new features introduced with **Bartels AutoEngineer Version 7.2**.

Bartels AutoEngineer Version 7.2 Highlights

Published by: Bartels System GmbH, Erding

Last printing: October 2008

The information contained in the **Bartels AutoEngineer** publications as well as the products and/or programs described therein are subject to change without notice and should not be construed as a commitment by Bartels System.

Although Bartels System has gone to great effort to verify the integrity of the information provided with the **Bartels AutoEngineer** publications, these publications could contain technical inaccuracies or typographical errors. Bartels System shall not be liable for errors contained therein or for incidental consequential damages in connection with the furnishing, performance or use of this material. Bartels System appreciates readers' and/or users' comments in order to improve these publications and/or the products described therein. Changes are periodically made to the information therein. These changes will be incorporated in new editions of the **Bartels AutoEngineer** publications.

All rights reserved. No part of the **Bartels AutoEngineer** publications may be reproduced, stored in a retrieval system, translated, transcribed or transmitted, in any form or by any means manual, electric, electronic, electromagnetic, mechanical, chemical, optical or otherwise without prior express written permission from Bartels System.

Bartels AutoEngineer®, **Bartels Router®** and **Bartels Autorouter®** are registered trademarks of Bartels System.

Bartels User Language™ and **Bartels Neural Router™** are trademarks of Bartels System. All other products or services mentioned in this publication are identified by the trademarks or service marks of their respective companies or organizations.

Copyright © 1986-2008 by Oliver Bartels F+E

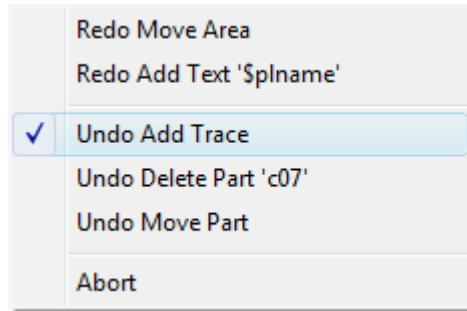
All Rights Reserved

Printed in Germany

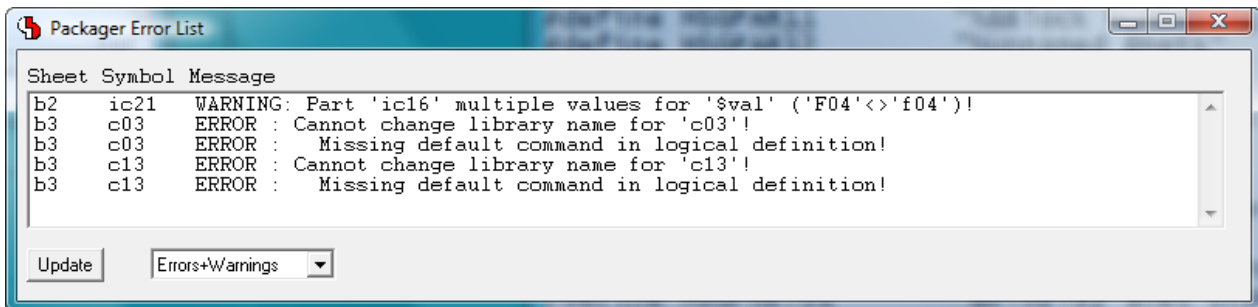
Contents

Bartels AutoEngineer® Version 7.2 Highlights	1
Undo/Redo List with Action/Function Display	5
Packager Error List with Zoom to Schematic Symbols.....	5
Modeless Dialogs	6
Display Grid Lines	7
Automatic Symmetric Polygon Generation.....	7
Layout Solder Side View	8
Layout Net Highlight with Pattern Display	8
WRL Export with External 3D Part Models	9

Undo/Redo List with Action/Function Display

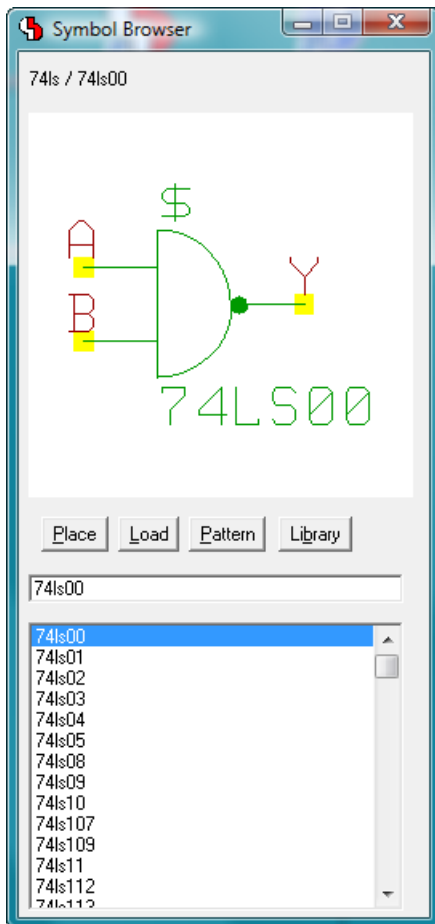


Packager Error List with Zoom to Schematic Symbols

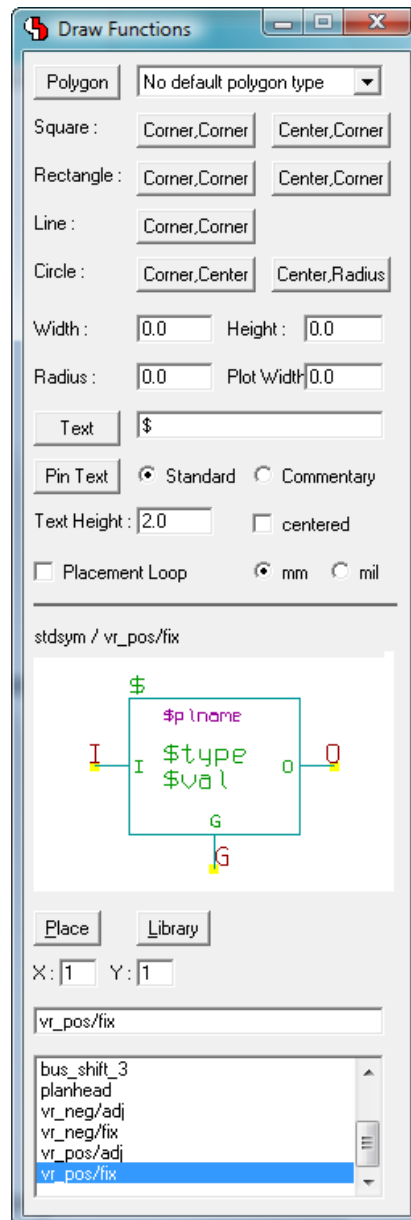


Modeless Dialogs

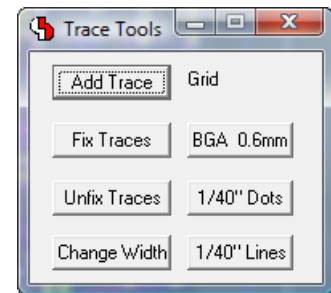
Symbol Browser



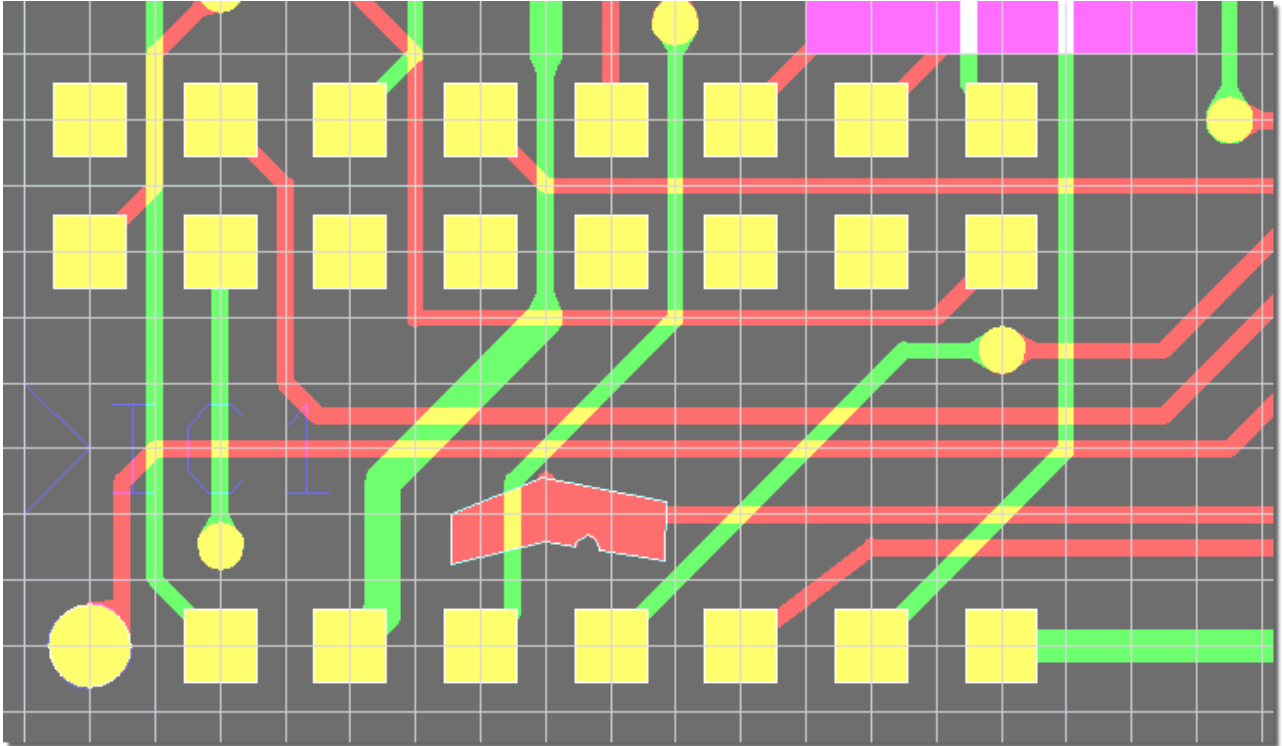
Draw Assistant



Favorites Dialog



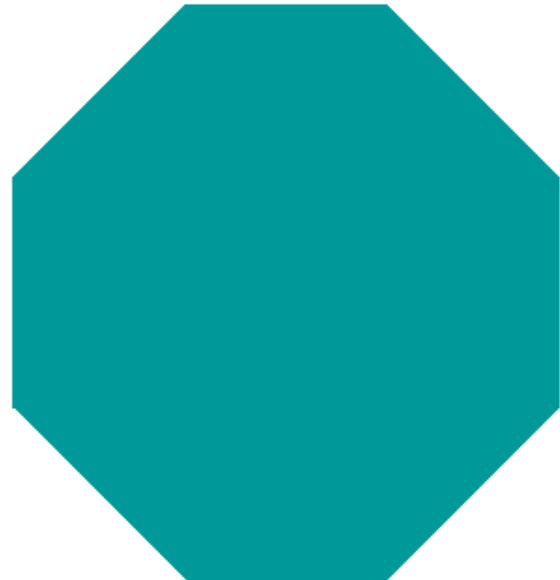
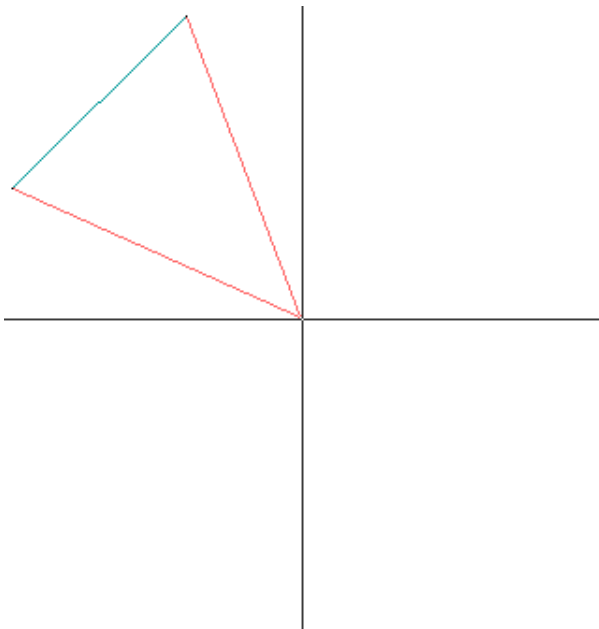
Display Grid Lines



Automatic Symmetric Polygon Generation

Create/Edit Polygon...

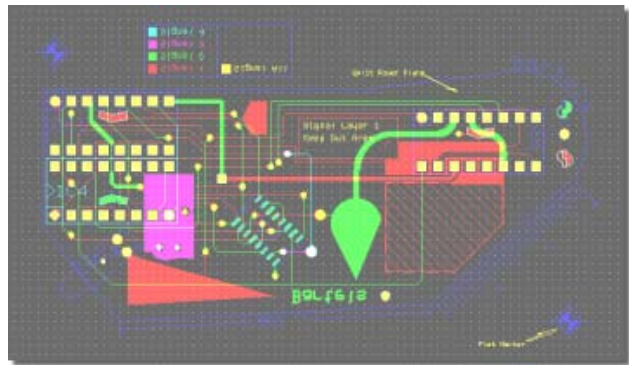
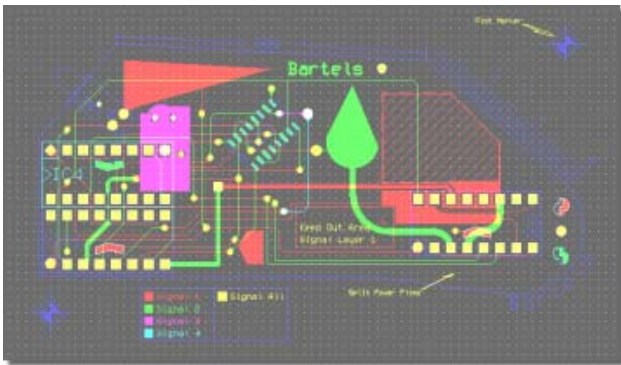
...Rotate Symmetrically



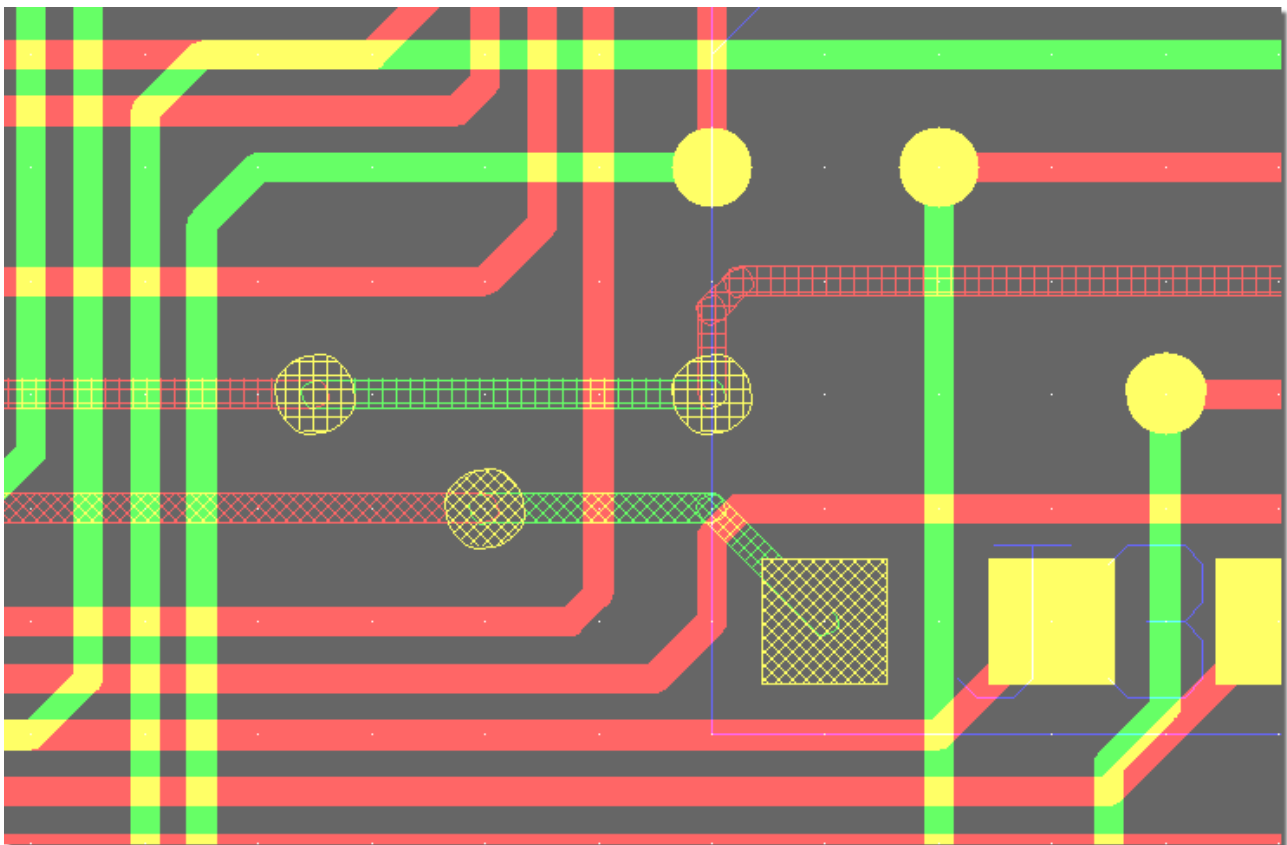
Layout Solder Side View

View Layout Component Side

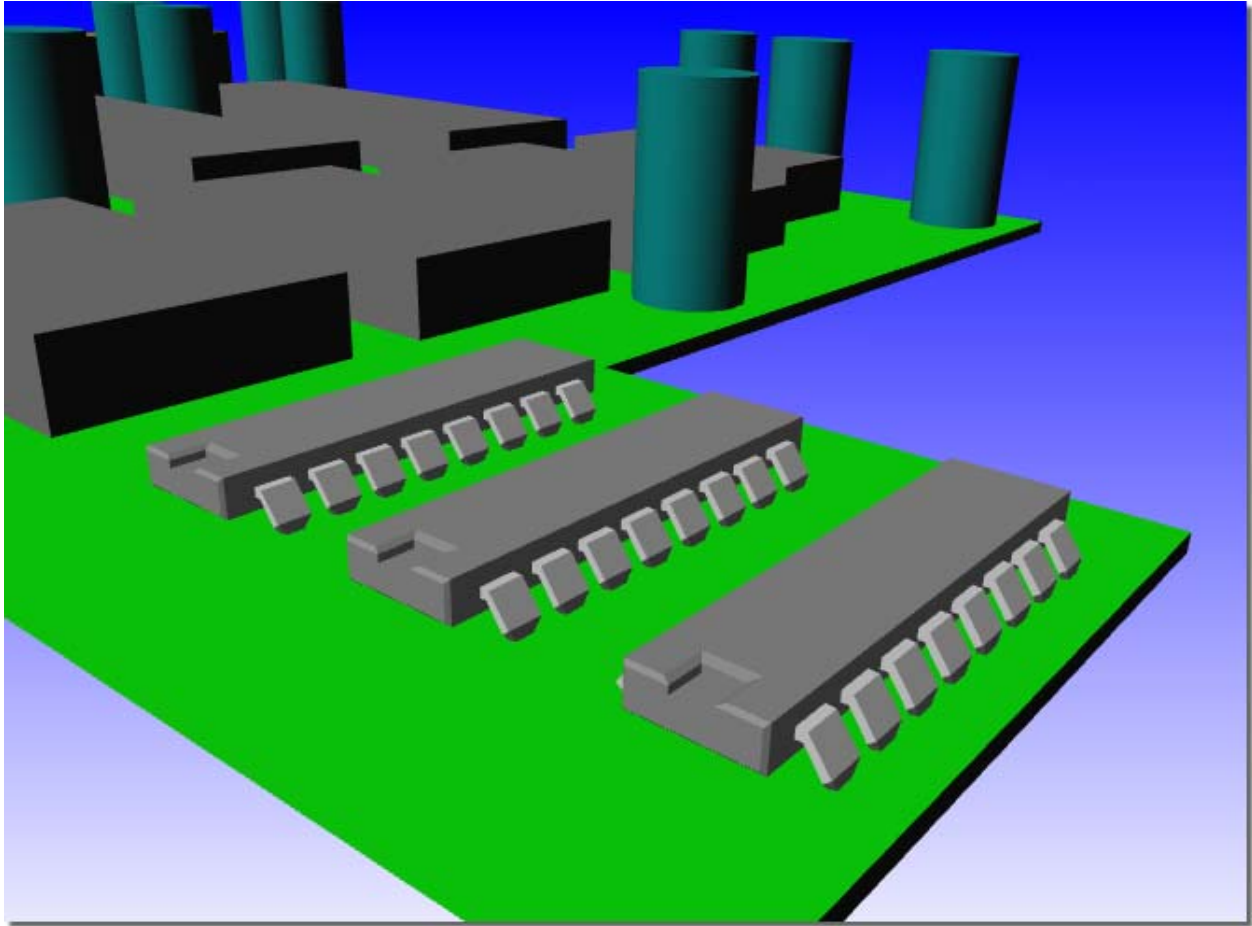
View Layout Solder Side



Layout Net Highlight with Pattern Display



WRL Export with External 3D Part Models



Please see the **Bartels AutoEngineer® Version 7.2 Release Notes** for a detailed description of all new features introduced with Bartels AutoEngineer Version 7.2 features.